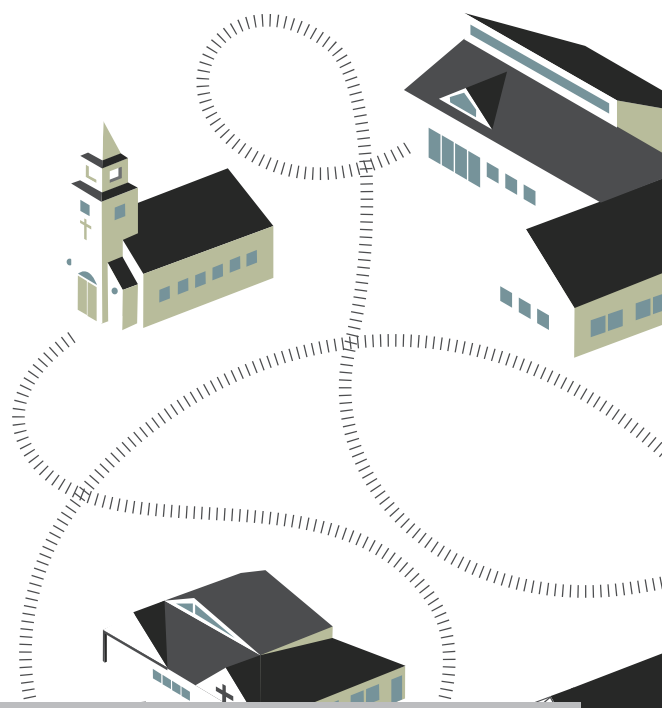


# cooperativeministries2008

## Commitment Form



Thank you for your prompt attention to the Cooperative Ministries Commitment Form for 2008. Your assistance by completing it is the first of many steps we will take together over the coming year as “a community of believers who worship and obey God and share the Good News of Jesus with all people” (BIC Church mission statement). As congregations like yours pool time, talent, and treasure in common purpose, God is able to do more than we could imagine. Through its Cooperative Ministries giving, your church is part of ministry goals with a national and international reach.

**DEADLINE:** Please return a copy of the form to your Conference Office and the General Church Office no later than **December 31, 2007**.

**CONGREGATION**

**CONFERENCE**

**1. OUR ESTIMATED OPERATING BUDGET FOR 2008 IS:**

**2. OUR COMMITMENT TO COOPERATIVE MINISTRIES IS:**

**3. THE PERCENTAGE OF OUR COMMITMENT IS:**

**OPTIONAL DESIGNATION:**

MINISTRY

AMOUNT



**NAME OF PERSON COMPLETING THIS FORM**

**DATE**

“**Operating budget**” refers to the regular expenses incurred on an annual basis by the congregation as it pursues its ministry plans, including rent and/or mortgage payments and expected maintenance of your facilities and equipment. If your church is involved in a special capital project (new construction or expansion), these costs **SHOULD NOT** be included on this line.

Commitments that come to “**Cooperative Ministries**” are distributed among the three categories of Going to all the World, Encouraging Leaders, and Starting and Supporting Healthy Congregations.

Congregations are encouraged to allocate at least **10-12 percent** of their operating budget to Cooperative Ministries. Participation in Cooperative Ministries is voluntary, an opportunity to be part of ministry with a national and international reach.

Commitments that come to “**Cooperative Ministries**” may be applied to a specific ministry priority of the General Church (e.g., world missions, church planting, compassion ministries, leadership development) or a Regional Conference.

